

Research Paper



Investigating the effects of dietary supplementation of eucalyptus camaldulensis essential oil on haemato-biochemical indices, immune response and oxidative stress of weaned rabbits

Alagbe. J.O*

*Department of Animal Nutrition and Biochemistry, Sumitra Research Institute, Gujarat, India.

Article Info**Article History:**

Received: 02 October 2023

Revised: 11 December 2023

Accepted: 19 December 2023

Published: 05 February 2024

Keywords:

Rabbits

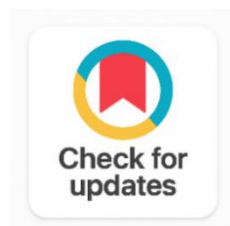
Immune Response

Oxidative Stress

Phytochemical

Eucalyptus Camaldulensis Oil

Superoxide Dismutase

**ABSTRACT**

The aim of this experiment was to investigate the effects of dietary supplementation of Eucalyptus camaldulensis essential oil on haemato-biochemical indices, immune response and oxidative stress of weaned rabbits. Sixty healthy weaned cross bred male rabbits (4 weeks of age) with initial body weight of 460.1 ± 0.25 g were grouped based on their body weight into four treatments containing treatment 1 (T1) basal diet with no Eucalyptus camaldulensis oil (ECO), T2, T3 and T4 were fed basal diet with 200 mg, 400 mg and 600 mg/kg respectively in a completely randomized design. Feed and clean water was supplied ad libitum throughout the experiment which lasted for 56 days. All haematological parameters (pack cell volume, red blood cell, haemoglobin, mean corpuscular volume, mean corpuscular haemoglobin, mean corpuscular haemoglobin concentrations, white blood cells and its differentials) were higher ($P < 0.05$) in T2, T3 and T4 relative to T1. Total protein, albumin, globulin, albumin/globulin ratio, cholesterol, aspartate transaminase, alanine transaminase and alkaline phosphatase values were greater in ECO supplemented diets whereas urea nitrogen, creatinine, calcium, phosphorus, potassium, sodium and bicarbonate were influenced by the treatments. However, all values were within the optimal range for healthy rabbits. Immunoglobulins, Malondialdehyde, superoxide dismutase, glutathione peroxidase, catalase and total antioxidant capacity were higher ($P < 0.05$) in T2, T3 and T4 than in other diet. Result revealed that ECO can be supplemented up to 600 mg/kg without negatively affecting the performance and health status of rabbits.

Corresponding Author:

Alagbe. J.O

Department of Animal Nutrition and Biochemistry, Sumitra Research Institute, Gujarat, India.

Email: dralagbe@outlook.com

Copyright © 2024 The Author(s). This is an open access article distributed under the Creative Commons Attribution License, (<http://creativecommons.org/licenses/by/4.0/>) which permits unrestricted use, distribution, and reproduction in any medium, provided the original work is properly cited.

1. INTRODUCTION

A variety of plants, including herbs, spices, and essential oils and oleoresins generated from plants, are used as phytogetic feed additives. Numerous biological functions are expressed by essential oils, including antibacterial, anti-inflammatory, immune-stimulatory, hepatoprotective, and antifungal ones [1]. Numerous studies were done to investigate options after antimicrobial growth promoters were outlawed in the European Union and other nations in 2009 [2]. The use of antibiotics in chickens must be reduced in order to lower the danger of antibiotic resistance globally in particular plant components, such as leaves (eucalyptus), bark (cinnamon), seeds (*Polyalthia longifolia*, anis, and pepper), bulbs (garlic), roots (ginger), or fruit peels (lemon, orange), essential oils tend to collect. A number of active components in eucalyptus camaldulensis oil allow this phytogetic to have anti-inflammatory, antioxidant, anti-protozoal, and immuno-modulatory qualities in addition to its antibacterial action [3], [4], [5], [6], [7], [8] [9]. Eucalyptus camaldulensis leaves and oils have been utilized to treat malaria, gastro-intestinal illnesses, diarrhea, cough, and dysentery [10]. Natural phytogetic feed additives like Eucalyptus camaldulensis oil have been thoroughly researched, and the advantages of chicken feed containing essential oils are well established, all of which aim to improve the performance of birds [11].

Numerous essential oils have been studied in rabbits, including those from thyme, rosemary, lemon grass, ginger, garlic, and turmeric [12]. According to several scientific investigations, certain essential oils can cause cell toxicity when used at greater doses [13], [14]. According to research [15], [16], Eucalyptus camaldulensis oil may stimulate bile secretion in the intestinal tract, promote enzyme production, speed up digestion, and guard against the entry of pathogenic microorganisms into animals' bodies. The differences in efficacy of essential oils are explained by the chemical makeup of essential oils, which underlay some variance caused by their constituents and other influencing elements including climate, harvest, stage, and storage conditions. Despite being necessary, it has been demonstrated to have antibacterial characteristics and a natural antibiotic alternative. On the other hand, there are conflicting data regarding their effectiveness and the right dosage in animal feeds. Information on the impact of supplemental feeding of Eucalyptus camaldulensis oil on the physiological parameters of rabbits is scarce. Therefore, this experiment aimed to investigate the effects of dietary supplementation of Eucalyptus camaldulensis essential oil on haemato-biochemical indices, immune response and oxidative stress of weaned rabbits.

2. METHODOLOGY

2.1. Experimental Site, Ethical Consent and Extraction of Eucalyptus Camaldulensis Oil

The study was carried out at the Livestock unit of Sumitra institute located between 23° 13' N and 72° 41' E. The study was carried out according to the rules and specifications of protocols approved by research ethic committee of Sumitra Research Institute, Gujarat, India. Fresh Eucalyptus camaldulensis leaves were harvested within the Research Institute and taken to the Department of Biological Sciences where a detailed identification and authentication was carried out. To eliminate dirt and other particles, leaves were washed. The samples were then divided into smaller pieces to minimize their surface area before being transported to the lab and kept in a sealed, tagged container to allow water to drain from the plant. Steam distillation technique is the extraction method used. The equipment needed for the lab procedure includes a steam generator, round bottom flask, beaker, condenser, safety tube, seperatory funnel thermometer, and a distillation flask connected to the steam generator by a delivery tube. 250 mL of distilled water was added after 80 grams of thinly cut Eucalyptus camaldulensis leaf was put into a 500

mL round bottom flask. Setting up the distillation flask, condenser, and receiver, the mixture in the round-bottom flask was heated to 70 °C for 15 minutes. The steam that was produced passed through the condenser, and when it was cold, oil was collected in the receiver (beaker). For the purpose of obtaining pure *Eucalyptus camaldulensis* essential oil (ECO), distillate is put through a separatory funnel.

2.2. Animals and their Care

A respected breeding farm in Gujarat, India, sold sixty weaned male crossbreed rabbits with an initial body weight (BW) of 460.1 ± 0.25 g that were approximately 4 weeks old and in clinically good health. Two weeks before to the start of the experiment, galvanized cages were thoroughly disinfected using Morigad®. Nipple drinkers and automatic feeders were also included. The rabbits were thoroughly checked once more and placed in semi-housed open pens with individual cages that measured 35 cm x 71 cm x 50 cm (length x width x height). According to the nutritional requirements for rabbits (NRC, 1979), rabbits were confined for 14 days and fed a basal diet that was appropriate in all nutrients Table 1. During their period of acclimation, they also received preventative treatment against parasites, including sulphadimidine sodium BP solution to prevent coccidiosis and Ivermectin® injection (subcutaneously administered at 0.1 mL/kg). In a perfectly randomized design, the body weight of the rabbits was used for splitting them into four treatment groups of fifteen rabbits each.

2.3. Experimental Arrangement

Treatment 1 (T1) utilizes a base diet without *Eucalyptus camaldulensis* essential oil (ECO); Treatment 2 (T2) used a base diet with 200 mg/kg ECO; Treatment T3 employs a base diet with 400 mg/kg ECO; and Treatment T4 includes a base diet with 600 mg/kg ECO.

2.4. Blood Samples Collection

On the last day of the experiment, blood samples were collected from 10 randomly selected rabbits per treatment for haematological and serum biochemical indices. Blood for haematological studies (2 mL) was collected from the marginal ear into a sample bottle with anticoagulants, another 2 ml was collected into bottles free from anticoagulant for serum biochemical analysis. All samples were placed in ice packs and transferred to the laboratory for further analysis. H360 fully automated 3-part haematology analyzer (model HEM0028, Czech Republic) was used to for haematological studies, this kit was employed because it is easy, efficient and reliable. It has the following technical specifications; Manual closed and open tube volume at 100 µL each, work station (intel pentium dual core 2.00 GHz 200 W desktop/tower), (3Gb/s 7200 RPM 16 MB Cache hard drive; 2 GB memory module CD-RW) and (11-inch torch screen with LCD monitor). Serum biochemical analysis was carried out using Pictus 700 automatic analyzer (model F1209-06A, Hungary) with the following technical specifications; photometric module (8 interference filters: 340, 405, 505, 546, 578, 630, 710 and 872 nm), measuring module (25 µL flow cell volume), 15 mm square cuvette, Minimum aspiration volume: 200 µL and analysis mode.

2.5. Immune Response Analysis

Blood samples were collected from 10 random selected rabbits (same rabbits used for blood analysis) for immunological analysis. Blood were collected into a sterile labelled plain bottle early in the morning and placed in an ice pack before they are transferred to the laboratory for further studies. Analysis was carried out using Accu-Tell® elisa reader (Model: ABER-2, Belgium) with the following technical specifications; work environment temperature (0°C – 40°C), humidity (85%), standard wave length (405, 450, 492, 630 nm, substitute filters from 400 – 700 nm), abs range (0-3. 500A), measurement range (0-2.000A), accuracy (0-2.0A: ± 1.0% or ± 0.007A), precision (0-2.0A: ± 0.5% or ± 0.005A), power (a.c.110 V), reading speed (continuous mode < 5s) and fuses (T315AL250V).

2.6. Oxidative Stress Indices

Total antioxidant capacity and activities of superoxide dismutase, catalase, glutathione peroxidase and Malondialdehyde were measured using Getein 1180 immunofluorescence quantitative

analyzer (Model 88-OL90D, Belgium). Calibration, buffering and other operations were strictly according to the manufacturer's recommendations.

2.7. Analysis of Experimental Diet

Analysis of experimental diet was carried out using Perkin Elmer near infra-red (Model DA 7250, England) which analyzes sample in 60 seconds. The machine has the following technical specifications; operating temperature range (5°C to 40°C), wavelength range (900 – 1700 nm) and wavelength accuracy (<0.05 nm).

2.8. Statistical Analysis

All data obtained were subjected to statistical analysis of variance (ANOVA) using Statistical Analytical System (SAS, 2003). Treatment means were compared using Duncan multiple range test of the same software.

The Statistical model used is shown below:

$$Y_i = \mu + T_{ij} + e_{ij}$$

Where: Y_i = the effect of the j th observation in the i th treatment μ = general mean of the population T_i = the effect of the i th treatment where $i = 4$ e_{ij} = random error associated with the j th observation in the i th treatment

Table 1. Experimental Diets' Chemical Composition

Feedstuffs	Quantity (Kg)
Maize	32.00
Wheat offal	15.00
Palm kernel meal	20.10
Soya meal	25.00
Bone meal	4.00
Limestone	2.00
Lysine	0.20
Methionine	0.10
*Min/vit premix	0.25
Salt	0.35
Total	100.0
Calculated analysis (% Dry matter)	
Crude protein	14.81
Crude fibre	13.30
Ether extract	1.91
Calcium	1.91
Phosphorus	0.72
Energy (kcal/kg)	2410.7
Determined analysis (% Dry matter)	
Crude protein	15.73
Crude fibre	12.11
Ether extract	2.00
Calcium	1.93
Phosphorus	0.88
Energy (kcal/kg)	2513.6

*Min/vitamin premix supplied per kg diet: - vitamin A, 6,800 I.U; vitamin E, 16.0 mg; vitamin D 2,000I.U, vitamin K, 5.00mg; vitamin B2, 5.0mg; Niacin, 65 mg; vitamin B12, 20 mg; choline chloride, 70 mg;

Manganese, 3.0 mg; Zinc, 35.1mg; Copper, 2.0g; folic acid, 2.5mg; Iron, 7.1g; pantothenic acid, 18mg; biotin, 35.5g; antioxidant, 60mg

2.9. Hematological Parameters of Weaned Rabbits Fed Diet Supplemented with Eucalyptus Camaldulensis Oil (ECO)

Hematological parameters of weaned rabbits fed diet supplemented with Eucalyptus camaldulensis oil (ECO) is displayed in Table 2. The dietary treatments influenced ($P < 0.05$) all the hematological parameters analyzed. However, the values were within the established ranges for healthy rabbits (Merck Veterinary Manual, 2011) recommending the absence of health challenges among rabbits. The pack cell volume, hemoglobin, red blood cells, mean corpuscular volume, mean corpuscular hemoglobin and mean corpuscular hemoglobin concentrations were greater ($P < 0.05$) in T2, T3 and T4 than in T1. Higher pack cell volume, red blood cell and hemoglobin values could lead to an increased cell ability to transport oxygen which translates to efficient distribution of nutrients in the body of animals [17]. This observation agreed with the findings of Algae (2023) where increased in pack cell volume, hemoglobin and red blood cell was reported in weaner pigs supplemented with Eucalyptus oil. Mean corpuscular volume, mean corpuscular hemoglobin and mean corpuscular hemoglobin concentrations were within the normal ranges by [18] suggesting that there was acute inflammation in the cells of rabbits. White blood cells, lymphocytes, monocytes, neutrophils and eosinophils were highest ($P < 0.05$) in T2, T3 and T4 relative to T1 indicating that the animal's immune system is strengthened. White blood cell is vital in body defense and immunity, it also detects foreign organisms and destroys those. Rising white blood cell in the blood stream is usually indicates a physiological problem/infection (Ross, 2021). Neutrophils are indices for stress and they also protect the body against bacterial infection such as acute inflammation. Elevation in the number of basophils occurs during acute hypersensitive reaction or allergy [19]. Eosinophils plays special role in the elimination of parasites such as worms and allergic infections [20]. Monocytes and lymphocytes are indices for immune response.

Table 2. Hematological Parameters of Weaned Rabbits Fed Diet Supplemented with Eucalyptus Camaldulensis Oil (ECO)

Parameters	Treatment 1	Treatment 2	Treatment 3	Treatment 4	Sem	Range
Pack cell volume (%)	34.18 ^b	40.70 ^a	40.92 ^a	41.00 ^a	0.82	31- 51
RBC ($\times 10^6/L$)	9.12 ^b	12.33 ^a	12.85 ^a	12.90 ^a	0.03	8 - 18
Hemoglobin (g/L)	100.6 ^b	127.6 ^a	129.5 ^a	131.6 ^a	3.18	100 - 180
MCH (pg.)	19.35 ^b	27.71 ^a	28.83 ^a	29.96 ^a	0.39	16 - 30
MCV (flu)	49.50 ^b	59.40 ^a	60.85 ^a	61.23 ^a	0.97	30 - 60
MCHC (%)	35.01 ^b	41.57 ^a	43.08 ^a	44.26 ^a	0.80	29 - 50
WBC ($\times 10^9/L$)	8.42 ^b	11.55 ^a	12.50 ^a	12.58 ^a	0.02	5 - 21
Lymphocytes (%)	51.48 ^b	67.62 ^a	67.95 ^a	70.10 ^a	0.91	20 - 85
Neutrophils (%)	23.70 ^b	32.18 ^a	33.04 ^a	33.86 ^a	0.65	21 - 50
Monocytes (%)	1.77 ^b	2.03 ^a	2.19 ^a	2.85 ^a	0.01	1 - 5
Eosinophil's (%)	1.45 ^b	2.99 ^a	3.02 ^a	3.08 ^a	0.01	1 - 4

2.10. Serum Biochemical Indices of Weaned Rabbits Fed Diet Supplemented with Eucalyptus Camaldulensis Oil (ECO)

The dietary treatment influenced the serum biochemical indices with the exception of creatinine, urea nitrogen, calcium, potassium, sodium, biocarbonate and phosphorus ions. Total protein, albumin and globulin values were maximum ($P < 0.05$) in T2, T3 and T4 relative to T1. However, all values were within the optimum range for healthy rabbits. The increase in globulin levels amongst rabbits fed ECO suggests efficient transportation of essential metals via the blood stream to all parts of the rabbits. Animals with severe infections frequently exhibit high globulin levels as a result of unusually elevated antibody

production. Increased total protein and albumin/globulin ratio in T2, T3 and T4 suggests that rabbits' ability to use protein is uninhibited. Cholesterol values were higher ($P < 0.05$) in T1 than in other diet, this reveals the ECO has hypocholesterolemic potential which could promote food safety and prevent the risk of heart diseases [4], [5] [7] [8] [21], [22], [23], [24], [25], [26], [27], [28], [29]. Urea nitrogen and creatinine levels were within the normal range for healthy rabbits reported by [30], this suggest the absence of kidney or liver damage and other metabolic disorders [31]. Aspartate transaminase, alanine transaminase and alkaline phosphatase are indices for liver damage, these values were within the optimal ranges for healthy rabbits [32] indicating absence of chronic liver inflammation, bile ducts, cholestasis as well as muscle damage in rabbits [33], [34]. Calcium, potassium, sodium, phosphorus and bicarbonate levels were not influenced ($P > 0.05$) by the treatments. However, all values were within the optimum ranges for rabbits reported by [35] suggesting that the experimental diets were able to regulate chemical reaction, maintain fluid balance and blood volume as well as energy processing in deoxyribonucleic acid and adenosine triphosphate [36], [37], [38], [39] reported that a normal serum bicarbonate level is a definite sign that kidney infections are absent.

Table 3. Serum Biochemical Indices of Weaned Rabbits Fed Diet Supplemented with Eucalyptus Camaldulensis Oil (ECO)

Parameters	Treatment 1	Treatment 2	Treatment 3	Treatment 4	Sem	Reference Val.
Total protein (g/L)	3.78 ^b	4.93 ^a	4.95 ^a	5.02 ^a	0.02	5.4 - 7.5
Albumin (g/L)	1.84 ^b	2.50 ^a	2.51 ^a	2.52 ^a	0.01	2.7 - 5.0
Globulin (g/L)	1.94 ^b	2.43 ^a	2.44 ^a	2.50 ^a	0.01	1.5 - 2.7
Albumin/globulin ratio	0.95 ^b	1.02 ^a	1.03 ^a	1.01 ^a	0.03	0.5 - 1.8
Cholesterol (mmol/L)	76.81 ^a	54.50 ^b	53.28 ^b	50.91 ^b	1.02	11 - 70
Urea nitrogen (mmol/L)	3.21	3.27	3.08	3.11	0.01	1.0 - 4.0
Creatinine (mmol/L)	2.09	2.11	2.08	2.21	0.01	0.91 - 3.0
AST (U/L)	115.7 ^a	100.6 ^b	98.12 ^b	98.00 ^b	1.23	35 - 130
Alanine transaminase (U/L)	72.56 ^a	60.80 ^b	60.11 ^b	60.02 ^b	1.01	45 - 80
alkaline phosphatase (U/L)	54.12 ^a	48.04 ^b	44.16 ^b	44.05 ^b	0.09	12 - 96
Calcium (mmol/L)	2.50	2.68	2.80	2.88	0.01	1.0 - 3.0
Potassium (mmol/L)	1.51	1.55	1.61	1.66	0.02	1.0 - 4.0
Sodium (mmol/L)	130.6	134.7	138.5	139.1	2.93	100 - 141
Bicarbonate (mmol/L)	27.4	28.5	29.1	29.6	0.09	15 - 40
Phosphorus (mmol/L)	1.40	1.49	1.51	1.55	0.01	1.0 - 3.5

AST: Aspartate transaminase; ^{a, b, c}Means in a row without a similar superscripts differ ($P < 0.05$); SEM: standard error of the mean

2.11. Immune Response of Weaned Rabbits Fed Diet Supplemented with Eucalyptus Camaldulensis Oil (ECO)

Table 4 revealed the immune response of weaned rabbits fed diet supplemented with Eucalyptus camaldulensis oil (ECO). Immunoglobulin A, immunoglobulin G and immunoglobulin M values were altered ($P < 0.05$) by supplementing ECO in the diets of rabbits. Immoglobulins (A, G and M) were higher ($P < 0.05$) in T2, T3 and T4 relative to T1 suggesting that ECO contains bioactive compounds especially eucalyptol and α -pinene which have immune-stimulatory properties. [40], [41] also explained that phytochemicals or bioactive compounds have several pharmacological activities including; hepato-protective, antimicrobial, antioxidants, antiviral, anti-helminthic, antifungal amongst others. Phenols are antioxidants or immune

boosters which prevents the body against the invasion of pathogenic organisms. The results obtained in this study corroborated with the findings by [42], [43] where increased immunoglobulin was reported in rabbits fed diet supplemented with *Alchornea cord folia* leaf. Similar results were recorded when phytogetic (*Gliricidia* leaf) was supplemented in the diets of weaned rabbits [44].

Table 4. Immune Response of Weaned Rabbits Fed Diet Supplemented with *Eucalyptus Camaldulensis* Oil (ECO)

Parameters	Treatment 1	Treatment 2	Treatment 3	Treatment 4	SEM
Immunoglobulin A ($\mu\text{g/mL}$)	1.77 ^b	2.97 ^a	3.05 ^a	3.11 ^a	0.02
Immunoglobulin G ($\mu\text{g/mL}$)	3.00 ^b	4.07 ^a	4.14 ^a	4.58 ^a	0.13
Immunoglobulin M ($\mu\text{g/mL}$)	0.92 ^b	1.26 ^a	1.55 ^a	1.57 ^a	0.01

^{a,b,c}Means in a row without a similar superscripts differ ($P < 0.05$); SEM: standard error of the mean

2.12. Oxidative Stress Indices of Weaned Rabbits Fed Diet Supplemented with *Eucalyptus Camaldulensis* Oil (ECO)

Oxidative stress indices of weaned rabbits fed diet supplemented with *Eucalyptus camaldulensis* oil (ECO) is presented in Table 5. Total antioxidant capacity values varied from 3.00 – 4.74 (nmol/L), superoxide dismutase (28.61 – 42.15 nmol/L), glutathione peroxidase (21.88 – 36.04 nmol/L), catalase (11.50 – 21.01 nmol/L) and Malondialdehyde (58.07 – 71.87 nmol/L). Total antioxidant capacity, superoxide dismutase, glutathione peroxidase, catalase and melondialdehyde values were greater ($P < 0.05$) in T2, T3 and T4 relative to T1. This result suggests that ECO has antioxidant properties (α -pinene and eucalyptol) which protects against toxic effects of free radicals [45], [46]. According to [43], [22], [23], [24], [25], [26] the protective mechanisms of antioxidants can occur at different levels; preventing the initiation of chain reactions by removing free radicals, interrupting chain sequence of scavenging free radicals generated in the chain reactions and removing the peroxidases, thereby preventing further generation of reactive oxygen species. The results obtained in this study agreed with the findings by [47] where the activities of free radicals were scavenged in animals fed diet supplemented with probiotics. Similar results were reported by [48] who recorded a positive response when natural plant extract was supplemented in the diet of rabbits.

Table 5. Oxidative Stress Indices of Weaned Rabbits Fed Diet Supplemented with *Eucalyptus Camaldulensis* Oil (ECO)

Parameters	Treatment 1	Treatment 2	Treatment 3	Treatment 4	Sem
Total antioxidant capacity (nmol/mL)	3.00 ^b	4.52 ^a	4.68 ^a	4.74 ^a	0.02
Superoxide dismutase (nmol/mL)	28.61 ^b	38.90 ^a	40.11 ^a	42.15 ^a	0.17
Glutathione peroxidase (nmol/mL)	21.88 ^b	30.14 ^a	35.49 ^a	36.04 ^a	0.05
Catalase (nmol/mL)	11.50 ^b	19.60 ^a	20.56 ^a	21.01 ^a	0.02
Malondialdehyde (nmol/mL)	71.87 ^a	59.93 ^b	59.34 ^b	58.07 ^b	0.08

^{a,b,c}Means in a row without a similar superscripts differ ($P < 0.05$); SEM: standard error of the mean

3. CONCLUSION

In conclusion, ECO expresses a wide range of biological activities including antimicrobial, antiviral, immune-stimulatory, hepato-protective, antioxidants amongst others. ECO is safe at 600 mg/kg because it does not pose any detrimental effect on haematological and serum biochemical parameters as well as the immune response of rabbits. Its ability to protect against toxic effects of free radicals will prevent diseases/mortality and promote food safety.

Acknowledgments

The authors have no specific acknowledgments to make for this research.

Funding Information

This research received no specific grant from any funding agency in the public, commercial, or not-for-profit sectors.

Author Contributions Statement

Name of Author	C	M	So	Va	Fo	I	R	D	O	E	Vi	Su	P	Fu
Alagbe. J.O	✓	✓	✓	✓		✓		✓	✓	✓	✓			

C : Conceptualization

M : Methodology

So : Software

Va : Validation

Fo : Formal analysis

I : Investigation

R : Resources

D : Data Curation

O : Writing - Original Draft

E : Writing - Review & Editing

Vi : Visualization

Su : Supervision

P : Project administration

Fu : Funding acquisition

Conflict of Interest Statement

The authors declare that there are no conflicts of interest regarding the publication of this paper.

Informed Consent

All participants were informed about the purpose of the study and their voluntary consent was obtained prior to data collection.

Ethical Approval

The study was conducted in compliance with the ethical principles outlined in the Declaration of Helsinki and approved by the relevant institutional authorities.

Data Availability

The data that support the findings of this study are available from the corresponding author upon reasonable request.

REFEENCES

- [1] S. Tobias, 'Producers can benefit from essential oils in pig finishing diets', International Pig Magazine, vol. 3, no. 4, pp. 4-5, 2022.
- [2] C. Laura, 'Sustainable poultry production with natural oregano oil', International Poultry Magazine, vol. 1, no. 4, pp. 1-2, 2021.
- [3] D. Jan, 'Phytogenics- be one step ahead with plant derived feed additives', International Pig Magazine, vol. 1, no. 4, pp. 2-3, 2021.
- [4] A. Olujimi, J. Anuore, D. N. Shittu, M. Daniel And Ramalan, and S. Mohammad, 'Growth performance and physiological response of weaned pigs fed diet supplemented with novel a phytogenics', Brazilian Journal of Science, vol. 3, no. 1, pp. 43-57, 2023. doi.org/10.14295/bjs.v3i1.444

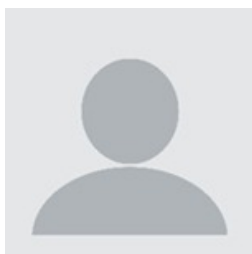
- [5] O. Alagbe, C. Oluchi, R. Agubosi, and A. Oluwafemi, 'Histopathology of broiler chickens fed diet supplemented with *Prosopis africana* (African mesquite) essential oil', *Brazilian Journal of Science*, vol. 2, no. 9, pp. 49-59, 2023. doi.org/10.14295/bjs.v2i9.385
- [6] A. Olujimi, 'Sensory evaluation and fatty acid composition of broiler chickens fed diets containing *Prosopis africana* oil', *Journal of Healthcare and Biomedical Science*, vol. 1, no. 2, pp. 36-45, 2023. doi.org/10.31098/jhbs.v1i2.1721
- [7] O. Alagbe, C. P. Oluchi, A. Rufus, O. Taiwo, E. Adegoke, and I. A. Emiola, 'Haemato-biochemical indices and intestinal microbial population of broiler chickens fed diet supplemented with *Prosopis africana* (African mesquite) essential oil', *Brazilian Journal of Science*, vol. 2, no. 9, pp. 98-110, 2023. doi.org/10.14295/bjs.v2i9.390
- [8] J. O. Alagbe, S. Bamigboye, G. C. Nwosu, and D. Agbonika, 'Characterization of bioactive compounds in *Luffa aegyptiaca* leaf ethanolic extracts using gas chromatography and mass spectrometry (GC-MS)', *Drug Discovery*, vol. 17, pp. e10-1011, 2023. doi.org/10.54905/diss.v17i39.e10dd1011
- [9] J. O. Alagbe, 'Bioactive compounds in ethanolic extract of *Strychnos innocua* root using gas chromatography and mass spectrometry (GC-MS)', *Drug Discovery*, vol. 17, pp. e4-1005, 2023. doi.org/10.54905/diss.v17i39.e4dd1005
- [10] T. Suman, 'Phytochemical and their use in the control of meat oxidation', *International Pig Magazine*, vol. 1, no. 2, pp. 3-4, 2021.
- [11] B. Santiago, 'The use of plant extracts to support growth in early calthood', *International Dairy Magazine*, vol. 3, no. 6, pp. 4-5, 2021.
- [12] R. Ines, 'Phytogenics: successful AGP replacement in swine diets', *International Pig Magazine*, vol. 6, no. 1, pp. 1-3, 2021.
- [13] F. G. Ahmed, M. Yacout, and F. M. Abo-Donia, 'Effect of using *Eucalyptus globulus* leaves in growing rabbits', *Egyptian Journal of Rabbit Science*, vol. 15, pp. 1-11, 2005.
- [14] A. Barra, V. Coronco, and A. Angioni, 'Chemical variability antifungal and antioxidant activity of *Eucalyptus* essential oil from Sardinia', *National Production and Communication*, vol. 5, pp. 329-335, 2010. doi.org/10.1177/1934578X1000500232
- [15] F. Moataz et al., 'Supplemental effects of *Eucalyptus* leaves on growth performance, carcass characteristics, blood chemistry and immune response of growing rabbits', *Annals of Animal Science*, vol. 19, no. 3, pp. 779-791, 2019. doi.org/10.2478/aoas-2019-0023
- [16] D. Farhadi, A. Karimi, G. Sadeghi, and M. Habibian, 'Effects of using *Eucalyptus* leaf powder and its essential oil on growth performance of broiler chicken', *Iranian Journal of Veterinary Sciences*, vol. 18, pp. 60-62, 2017.
- [17] M. Kerr, 'Veterinary Laboratory Medicine', *Clinical Biochemistry and Haematology*, 1989.
- [18] 'Rabbit Clinical Pathology', *Journal of Exotic Pet Medicine*, vol. 16, no. 3, pp. 135-145, 2007. doi.org/10.1053/j.jepm.2007.06.002
- [19] K. Quesenberry and J. W. Carpenter, *Ferrets, Rabbits and Rodents Clinical Medicine and Surgery*. Saunders; St Louis: Elsevier, 2003.
- [20] Silva T.D.O., Kreutz L.C., Barcellos L.J.G., Borella J., Soso A.B., Souza C. (2005). Reference values for chinchilla (*Chinchilla laniger*) blood cells and serum biochemical parameters. *Cienc. Rural*, 35: 602-606. doi:10.1590/S0103-84782005000300017 doi.org/10.1590/S0103-84782005000300017
- [21] J. O. Alagbe, M. C. Kadiri, R. A. Oluwafemi, O. C. Agubosi, and D. N. Anorue, 'Analysis of bioactive compounds in ethanolic extracts of *Xylopiya aethiopica* leaves using gas chromatography and mass spectrometry technique', *American Journal of Science on Integration and Human Development*, vol. 1, no. 1, pp. 1-10, 2023. doi.org/10.61363/fsamr.v2i1.59
- [22] D. Muritala, J. O. Alagbe, O. O. Ojebiyi, T. Ojediran, and T. A. Rafiu, 'Growth performance and haematological and serum biochemical parameters of broiler chickens given varied concentrations of *Polyalthia longifolia* leaf extract in place of conventional antibiotics', *Animal Science and Genetics*, vol. 18, no. 2, pp. 57-71, 2022. doi.org/10.5604/01.3001.0015.9185


- [23] J. O. Alagbe, M. Shittu, and K. Babatunde, 'Influence of Anogeissusleio carpus stem bark on the fatty acid composition in meat of broiler chickens', *European Journal of Life Safety and Stability*, vol. 14, no. 22, pp. 13-22, 2022.
- [24] J. O. Alagbe, M. Shittu, and K. Babatunde, 'Influence of Anogeissusleio carpus stem bark on the fatty acid composition in meat of broiler chickens', *European Journal of Life Safety and Stability*, vol. 14, no. 22, pp. 13-22, 2022.
- [25] J. Alagbe, 'Use of medicinal plants as a panacea to poultry production and food security: A review', *Gospodarka I Innowacje*, vol. 22, pp. 1-12, 2022.
- [26] S. Sharma, S. Liu Xing, and K. Ram, 'Comparative analysis of ethanolic Juniperus thurifera leaf, stem bark and root extract using gas chromatography and mass spectroemetry', *International Journal of Agriculture and Animal Production*, vol. 2, no. 6, pp. 18-27, 2022. doi.org/10.55529/ijaap.26.18.27
- [27] A. O. Adewale, J. O. Alagbe, and A. O. Adeoye, 'Dietary Supplementation of Rauvolfia Vomitoria Root Extract as A Phytogenic Feed Additive in Growing Rabbit Diets: Haematology and serum biochemical indices', *International Journal of Orange Technologies*, vol. 3, no. 3, pp. 1-12, 2021.
- [28] A. S. Singh, J. O. Alagbe, S. Sharma, R. Oluwafemi, and O. C. P. Agubosi, 'Effect of dietary supplementation of melon (*Citrullus linatus*) seed oil on the growth performance and antioxidant status of growing rabbits', *Journal of Multidimensional Research and Reviews*, vol. 2, no. 1, pp. 78-95, 2021. doi.org/10.47540/ijias.v1i2.175
- [29] M. D. Shittu et al., 'Productive Performance, Caeca Microbial Population and Immune-Modulatory Activity of Broiler Chicks Fed Different Levels Sida Acuta Leaf Extract in Replacement of Antibiotics', *Bioinformatics and Proteomics Open Access Journal*, vol. 5, no. 1, 2021. doi.org/10.23880/bpoj-16000143
- [30] C. Özkan, A. Kaya, and Y. Akgül, 'Normal values of haematological and some biochemical parameters in serum and urine of New Zealand White rabbits', *World Rabbit Sci.*, vol. 20, no. 4, Dec. 2012. doi.org/10.4995/wrs.2012.1229
- [31] E. Omokore and J. O. Alagbe, 'Efficacy of dried Phyllanthus amarus leaf meal as an herbal feed additive on the growth performance, haematology and serum biochemistry of growing rabbits', *International Journal of Academic Research and Development*, vol. 4, no. 3, pp. 97-104, 2019.
- [32] R. Saunders and R. Davies, *Notes on Rabbit Internal Medicine*. Oxford, UK: Blackwell Publishing, 2005.
- [33] A. M. Fudge, 'Rabbit hematology', in *Laboratory Medicine: Avian and Exotic Pets*, Philadelphia, PA: WB Saunders Company, 2000, pp. 273-275.
- [34] D. R. Reavill, R. E. Schmidt, and P. A. Philadelphia, 'Rabbit surgical pathology', in *Laboratory Medicine: Avian and Exotic Pets*, 2000, pp. 353-366.
- [35] M. Soleimani, M. Nematbakhsh, and S. Haghjooyjavanmard, 'The effect of hypercholesterolemia on serum vascular Endothelial Growth Factor and nitrite concentrations in early stage of atherosclerosis in rabbits', *Pak. J. Nutr.*, vol. 8, no. 1, pp. 86-89, Dec. 2008. doi.org/10.3923/pjn.2009.86.89
- [36] C. Kozma, W. Macklin, and L. M. Cummins, 'The anatomy, physiology and the biochemistry of the rabbit', in *The Biology of the Laboratory Rabbit*, S. H. Weisbroth, R. E. Flatt, and A. L. Kraus, Eds San Diego, CA: Academic Press, 1974, pp. 59-64. doi.org/10.1016/B978-0-12-742150-6.50008-6
- [37] M. A. Betancourt-Alonso, A. Orihuela, V. Aguirre, R. Vázquez, and F. I. Flores-Pérez, 'Changes in behavioural and physiological parameters associated with Taenia pisiformis infection in rabbits (*Oryctolagus cuniculus*) that may improve early detection of sick rabbits', *World Rabbit Sci.*, vol. 19, no. 1, Mar. 2011. doi.org/10.4995/wrs.2011.801
- [38] F. Harcourt-Brown and S. J. Baker, 'Parathyroid hormone, hematological and biochemical parameters in relation to dental disease and husbandry in pet rabbits', *Journal of Small Animal Practice*, vol. 42, pp. 130-136, 2001. doi.org/10.1111/j.1748-5827.2001.tb02009.x
- [39] F. Harcourt-Brown, *Textbook of Rabbit Medicine*. Oxford, UK: Butterworth-Heinemann, 2002.
- [40] R. A. Oluwafemi, A. O. Adelowo, S. Adetope, and J. O. Alagbe, 'Effects of dietary inclusion of ginger (*Zingiber officinale*) and garlic (*Allium sativum*) oil on carcass characteristics and sensory evaluation

- of broiler chicken', Texas Journal of Multidisciplinary Studies, vol. 2, no. 11, pp. 180-188, 2021. doi.org/10.37899/journallamedihaltico.v2i6.486
- [41] R. A. Oluwafemi, S. Daniel, and J. O. Alagbe, 'Haematology and serum biochemical indices of broiler chicks fed different inclusion levels of ginger (*Zingiber officinale*) and garlic (*Allium sativum*) oil mixture', International Journal of Discoveries and Innovations in Applied Sciences, vol. 1, no. 4, pp. 20-26, 2021.
- [42] O. D. Oloruntola, S. O. Ayodele, J. O. Agbede, D. A. Oloruntola, M. Ogunsipe, and I. S. Omoniyi, 'Effect of *Alchornea cordifolia* leaf meal and enzyme supplementation on growth, haematological, immunostimulatory and serum biochemical response of rabbits', Asian Journal of Biological and Life Sciences, vol. 5, no. 2, pp. 190-195, 2016.
- [43] S. O. Ayodele, O. D. Oloruntola, and J. O. Agbede, 'Effect of *Alchornea cordifolia* leaf meal inclusion and enzyme supplementation on performance and digestibility of rabbits', World Rabbit Sci., vol. 24, no. 3, p. 201, Sept. 2016. doi.org/10.4995/wrs.2016.3933
- [44] Oloruntola, O. D., Agbede, J. O., Ayodele, S. O., Ayedun, E. S., Daramola, O. T. and Oloruntola, D. A. (2018c). *Gliricidia* leaf meal and multi-enzyme in rabbits diet: effect on performance, blood indices, serum metabolites and antioxidant status. Journal of Animal Science and Technology, 60, 24. <https://doi.org/10.1186/s40781-0182-2>. doi.org/10.1186/s40781-018-0182-8
- [45] O. A. Olafadehan, R. Oluwafemi, and J. O. Alagbe, 'Carcass quality, nutrient retention and caeca microbial population of broiler chicks administered Rolfe (*Daniellia oliveri*) leaf extract as an antibiotic alternative', Journal of Drug Discovery, vol. 14, no. 33, pp. 146-154, 2020.
- [46] O. A. Olafadehan, R. Oluwafemi, and J. O. Alagbe, 'Performance, haemato-biochemical parameters of broiler chicks administered Rolfe (*Daniellia oliveri*) leaf extract as an antibiotic alternative', Advances in Research and Reviews, vol. 1, 2020.
- [47] E. A. Awad, I. Zulkifli, S. K. Ramiah, E. S. Khalil, and M. E. Abdallah, 'Prebiotics supplementation: an effective approach to mitigate the detrimental effects of heat stress in broiler chickens', World's Poultry Science Journal, vol. 77, no. 1, pp. 135-151, 2020. doi.org/10.1080/00439339.2020.1759222
- [48] C. L. Manuelian et al., Plant feed additives as natural alternatives to the use of synthetic antioxidant vitamins on livestock mammals' performances, health. 2021. doi.org/10.3390/antiox10091461

How to Cite Alagbe. J.O. (2024). Investigating the effects of dietary supplementation of eucalyptus camaldulensis essential oil on haemato-biochemical indices, immune response and oxidative stress of weaned rabbits. International Journal of Agriculture and Animal Production (IJAAP), 4(1), 34-44. <https://doi.org/10.55529/ijaap.41.34.46>

BIOGRAPHIE OF AUTHOR



Alagbe. J.O. , is a researcher in the Department of Animal Nutrition and Biochemistry at Sumitra Research Institute, Gujarat, India. He is actively engaged in experimental research at Sumitra Research Institute, often collaborating with scientists from Nigerian universities including Ladoke Akintola University of Technology and the University of Abuja. His research focuses on evaluating the phyto-nutritional profiles of medicinal plants and their application as feed additives in livestock production. His work spans haemato-biochemical indices, immune response, oxidative stress, and growth performance of monogastric animals including broilers, rabbits, and swine. He is a prolific author with over 2,400 citations to his credit.
Email: dralagbe@outlook.com